

MONTHLY MEMBERSHIP PROGRESS REPORT

District 325 F

Results as of: 4/30/2026

GMT:

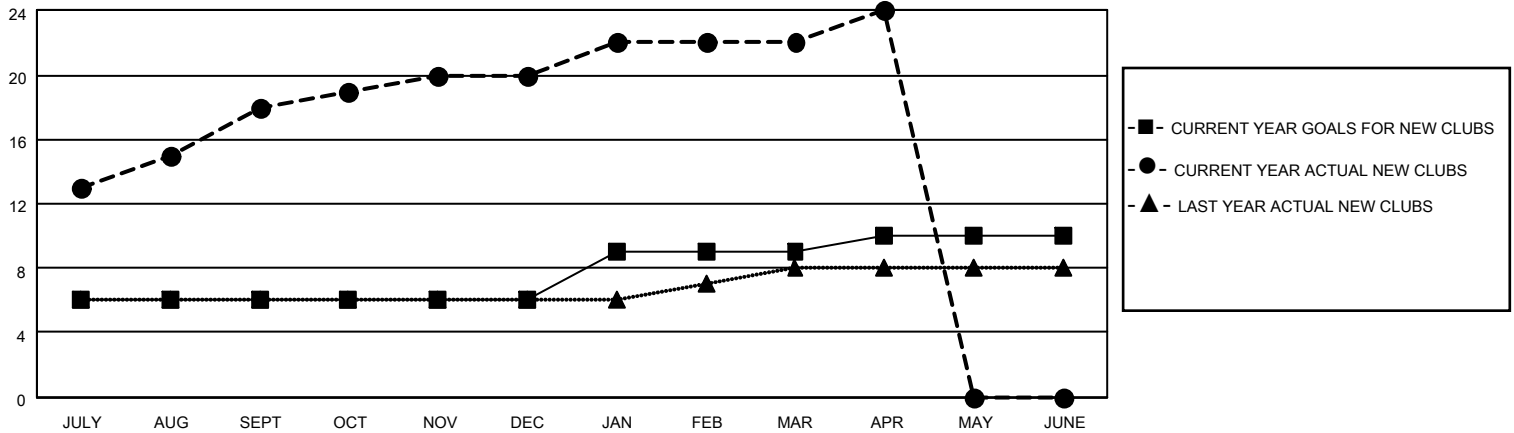
LOCATION NEPAL

GMT CA

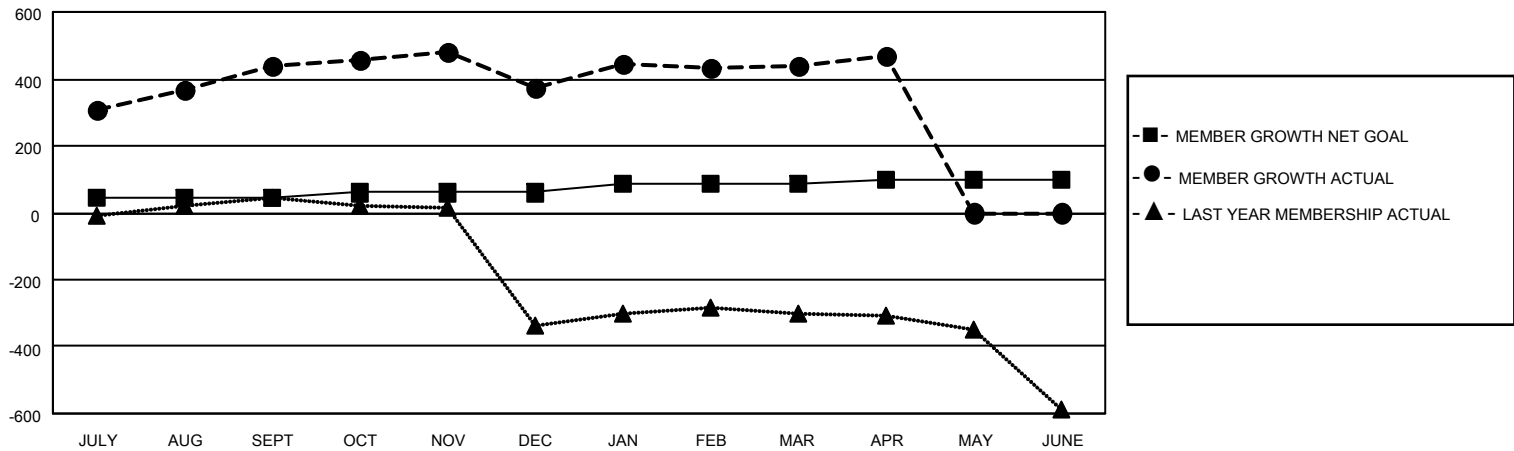
Clubs			
RESULTS FOR 2025-2026			
QUARTER	NEW CLUB GOAL	NEW CLUBS	DROPPED CLUBS
JULY/AUG/SEPT	6	18	1
OCT/NOV/DEC	0	2	0
JAN/FEB/MAR	3	2	0
APR/MAY/JUNE	1	2	0

Members			
RESULTS FOR 2025-2026			
QUARTER	MEMBER GROWTH NET GOAL	MEMBER GROWTH ACTUAL	DROPPED MEMBERS ACTUAL (including transfers)
JULY/AUG/SEPT	45	536	58
OCT/NOV/DEC	15	98	157
JAN/FEB/MAR	25	119	34
APR/MAY/JUNE	15	56	12

GOALS AND ACTUAL NEW CLUBS CUMULATIVE



GOALS AND ACTUAL MEMBERS CUMULATIVE



DROPPED CLUBS: 1	88 CLUBS OF 131 ADDED 1 OR MORE NEW MEMBERS	<u>GENDER DISTRIBUTION</u>			
<u>DROPPED MEMBERS</u>		MALE	1,837 (70.22%)		
DECEASED	2	FEMALE	779 (29.78%)		
CLUB CANCELLED	6	TOTAL FAMILY UNIT MEMBERS 1,838			
OTHER	251			FAMILY MEMBERS PAYING HALF DUES 1,279	
TOTAL	259				
		CLICK HERE FOR CUMULATIVE MEMBERSHIP DATA			